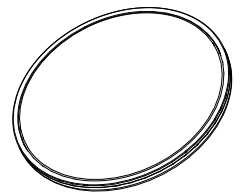


Dismantling Recommendation on Disposal at End of Life

•Composition Explanation –Ceiling Type A



Plastic part	Electrical part	Metal part
cover 	PCB1 	Safety cable
housing 	PCB2 	/
side 	driver 	/
canopy 	/	/
Other small plastic part: -Terminal block -Pressure line code	Other small electrical part	Other small metal part -Screws

Dismantling

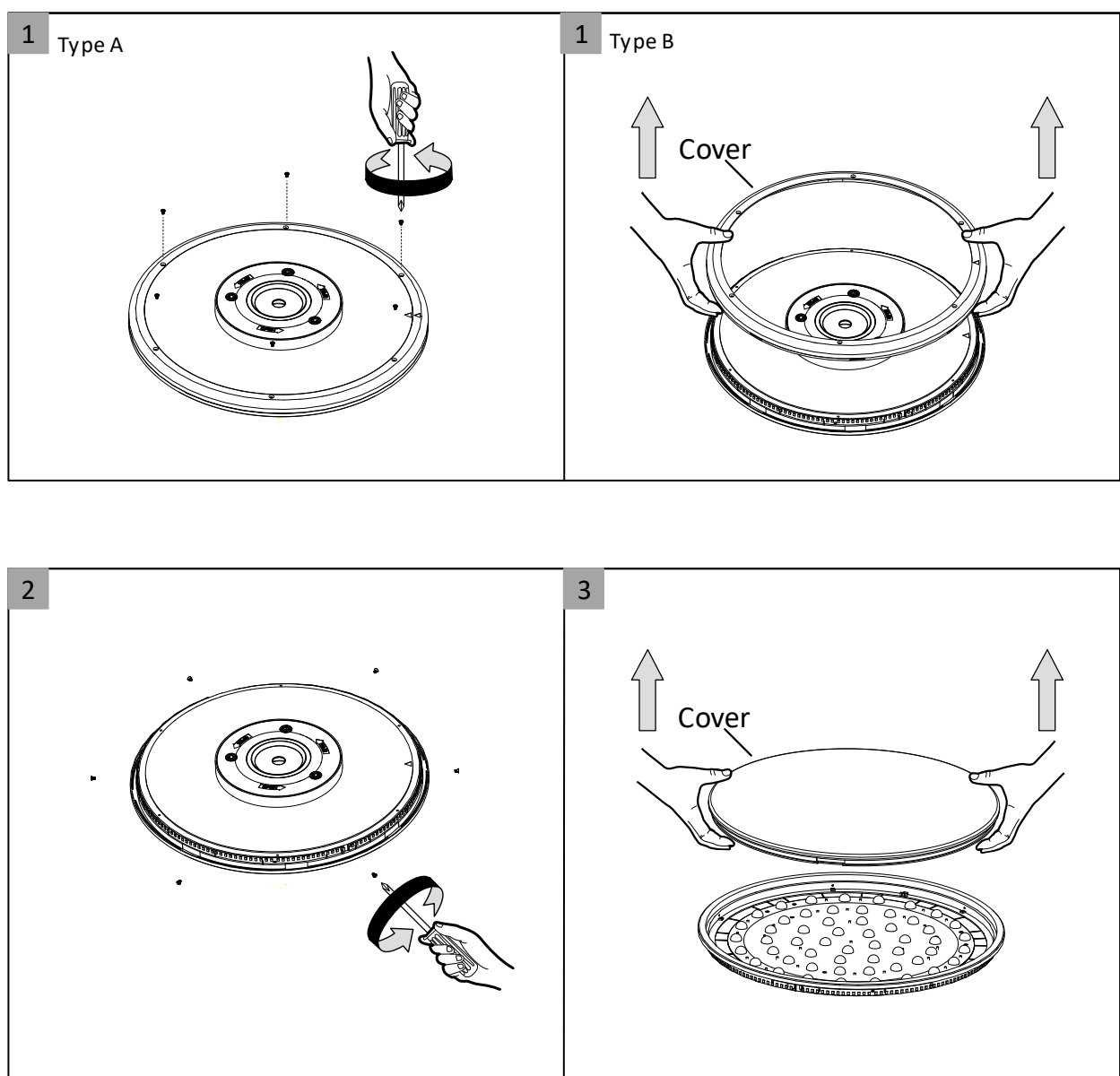
- Steps: refer to disassembly instruction
- Type: without permanent damage

Recommendation on disposal

- Plastic part :reuse and recycling
- Electrical part :incineration and disposal
- Metal part :recycling

Philips and the Philips shield Emblem are registered trademarks of Koninklijke Philips N.V

•The Steps to Remove the Components



Philips and the Philips shield Emblem are registered trademarks of Koninklijke Philips N.V